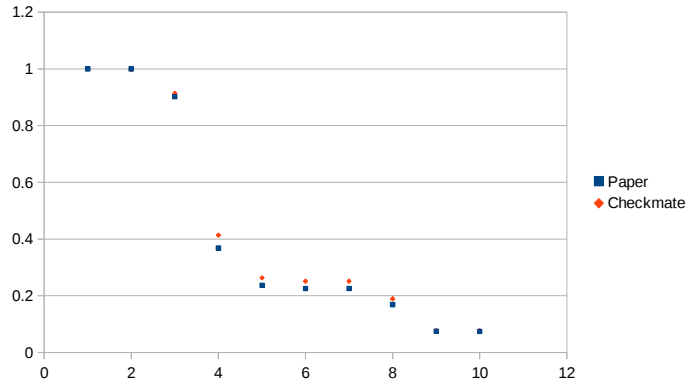


Validation for atlas_1605_03814

All Cutoffs are with respect to the Simplified model point (gluino,N1)=(1600,0) GeV

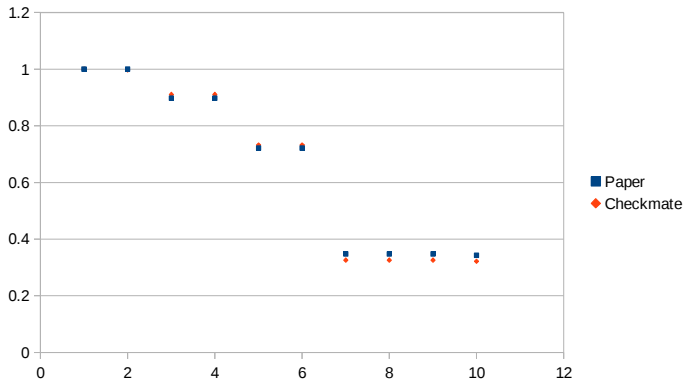
Cutflow for SR6jm

Acceptance	Paper	Checkmate
a_All	1	1
b_NoLep	1	0.997243
c_ET_PT	0.9018	0.913722
d_Mult	0.3683	0.413508
e_dPhi	0.2372	0.263242
f_PT	0.2256	0.251506
g_ETHT	0.2256	0.251506
h_Aplanari	0.1687	0.189501
i_MetMeff	0.0755	0.077012
j_Meff	0.0746	0.076646



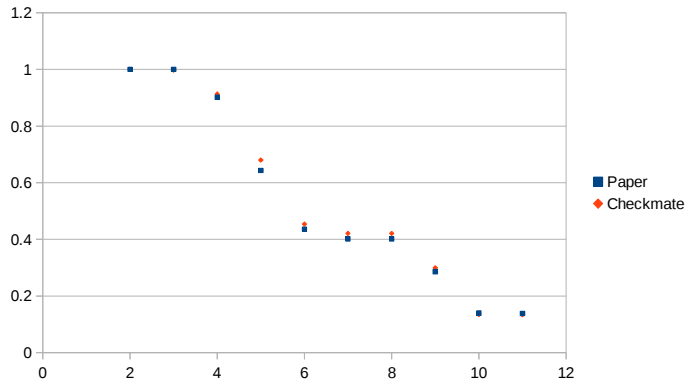
Cutflow for SR2jm

Acceptance	Paper	CheckMate
a_All	1	1
b_NoLep	1	0.99746
c_ET_PT	0.8975	0.910629
d_Mult	0.8975	0.910629
e_dPhi	0.7216	0.732614
f_PT	0.7216	0.732614
g_ETHT	0.3478	0.325884
h_Aplanari	0.3478	0.325884
i_MetMeff	0.3478	0.325884
j_Meff	0.3428	0.321847



Cutflow for SR5j

Acceptance	Paper	CheckMate
a_All	1	1
b_NoLep	1	0.997387
c_ET_PT	0.9018	0.913026
d_Mult	0.6434	0.680433
e_dPhi	0.4361	0.454104
f_PT	0.4018	0.420905
g_ETHT	0.4018	0.420905
h_Aplanari	0.2862	0.299596
i_MetMeff	0.1401	0.134894
j_Meff	0.1388	0.134161



Cutflow for SR4jt

Acceptance	Paper	CheckMate
a_All	1	1
b_NoLep	1	0.996861
c_ET_PT	0.9018	0.913239
d_Mult	0.857	0.874853
e_dPhi	0.5969	0.600328
f_PT	0.5227	0.529314
g_ETHT	0.5227	0.529314
h_Aplanari	0.3562	0.362424
i_MetMeff	0.2524	0.24531
j_Meff	0.2138	0.209888

